

SUBMITTAL DATA SHEET

COMFORTEER™ SINGLE PACKAGE HEAT PUMPS (13 SEER, R-410A) 2 - 5 TON MODELS: UB024 thru 060



JOB NAME:		LOCATION:		
PURCHASER:		ORDER NO:		
ENGINEER:				
SUBMITTED TO:	FOR:	REF:	APPROVAL:	CONSTRUCTION:
SUBMITTED BY:		DATE:		
UNIT DESIGNATION:		SCHEDULE NO.		MODEL NO.

COOLING PERFORMANCE

EFFICIENCY ----- SEER
TOTAL CAPACITY----- MBH
SENSIBLE CAPACITY ----- MBH
OUTDOOR DESIGN TMP. _____ °F DB/WB
TOTAL SUPPLY AIR ----- CFM
TEMP. OF AIR ENTERING
EVAPORATOR COIL ----- °F DB/WB
POWER INPUT REQ. ----- KW
(LESS BLOWER MOTOR)

HEATING PERFORMANCE

CAPACITY
@ 47°F----- MBH
@ 17°F----- MBH
COEFFICIENT OF PERFORMANCE
@ 47°F----- MBH
@ 17°F----- MBH
RESISTANCE HEAT
MODEL NUMBER--
CAPACITY----- MBH
VOLTS-----
POWER INPUT REQ. ----- KW

SUPPLY AIR BLOWER PERFORMANCE

TOTAL SUPPLY AIR ----- CFM
TOTAL RESISTANCE EXTERNAL
TO UNIT ----- IWG
BLOWER SPEED (Circle)----- RPM
MOTOR RATING ----- HP
POWER INPUT REQ. ----- KW

ELECTRICAL DATA

POWER SUPPLY----- / /
TOTAL UNIT AMPACITY ----- AMPS
MAX. OVERCURRENT DEVICE
___ FUSES ___ CIRCUIT BREAKER - AMPS

TOTAL UNIT WEIGHT

TOTAL UNIT WEIGHT (operational) - LBS

STANDARD FEATURES

- Two compact footprints to optimize performance and save installation space.
- Side electrical utility connections.
- Top discharge condenser air design with flush mounted grille guard.
- Full perimeter, removable base rails with built in shipping provisions.
- Unit cabinet is constructed of G-90, pre-paint textured steel, certified at 500 hours salt spray test per ASTM-B117 standards.
- Attractive cabinet design with single piece "Water-Shed" top cover and drip edge to deter water collection and longer life.
- Factory installed, attractive protection condenser coil grille.
- High efficient rifled tube with enhanced fin condenser and evaporator coils.
- Permanently lubricated outdoor and indoor motors.
- Constant torque indoor motor.
- Non corrosive condensate pan internally sloped to meet strict requirements of ASHRAE 62-89 Indoor Air Quality standard.
- Internal compressor protection (temperature and pressure).
- Standard cooling operation down to 45° F.
- Solid core filter drier standard.
- Ridged mounted, protected refrigerant access ports externally accessible.
- Colored wires for ease of service.
- Reliable demand defrost control with built-in anti-short cycle timer.
- Field installed electric heaters available.
- Warranties on all applications:
 - 10 year single phase compressor warranty and 5 or 10* year limited warranty on parts.
 - *To qualify for the extended 10-year parts warranty, the unit must be registered online at www.upgproductregistration.com within 90 days of install.
 - 5 year 3 phase compressor warranty and 1 year limited warranty on parts.
 - 5 year electric heat element warranty.

CLEARANCES

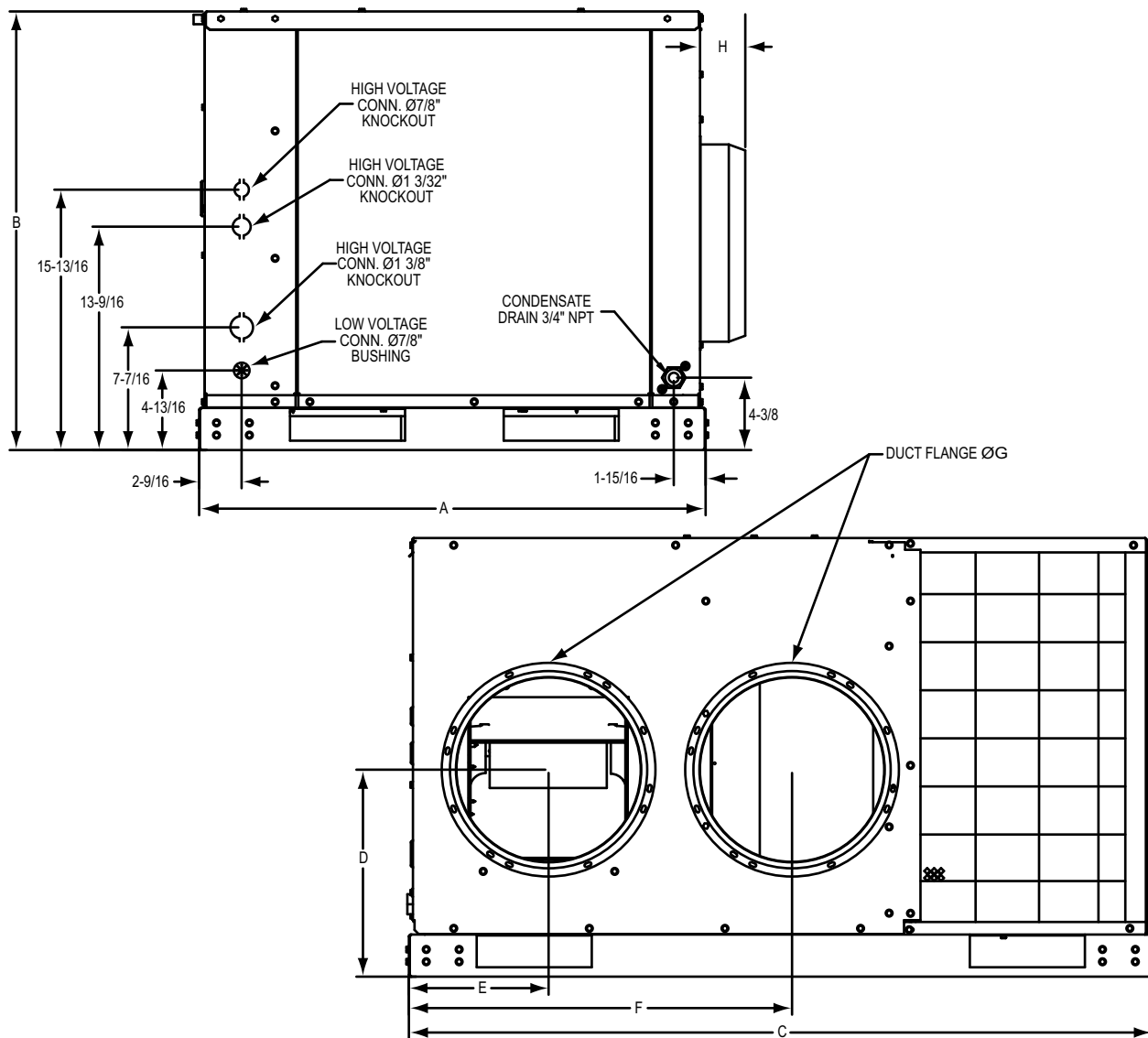
TOP¹----- 60"
FRONT ----- 36"
REAR² ----- 18"
RIGHT SIDE ----- 24"
LEFT SIDE ----- 24"
BOTTOM----- 0"

1. Units must be installed outdoors. Over hanging structure or shrubs should not obscure condenser air discharge outlet.
2. Unit may be positioned to draw air from under-neath structure.

NOTE:

- Refer to the latest technical guide for unit specifications.

DIMENSIONS - INCHES



Size (Tons)	Dimensions							
	"A"	"B"	"C"	"D"	"E"	"F"	"G"	"H"
024 (2.0)	32 13/16	30 15/16	47 1/4	12 9/16	8 1/2	24 1/16	12	2 3/4
030 (2.5)	32 13/16	30 15/16	47 1/4	12 9/16	8 1/2	24 1/16	12	2 3/4
036 (3.0)	32 13/16	30 15/16	47 1/4	12 9/16	8 1/2	24 1/16	12	2 3/4
042 (3.5)	32 13/16	34 15/16	57 9/16	11 9/16	10 5/16	28 7/8	14	2 3/4
048 (4.0)	32 13/16	34 15/16	57 9/16	11 9/16	10 5/16	28 7/8	14	2 3/4
060 (5.0)	32 13/16	34 15/16	57 9/16	11 9/16	10 5/16	28 7/8	14	2 3/4

Subject to change without notice. Printed in U.S.A.
Copyright © 2011 by Johnson Controls, Inc. All rights reserved.

546139-CSD-C-0711
Supersedes: 546139-CSD-B-0910

Johnson Controls Unitary Products
5005 York Drive
Norman, OK 73069