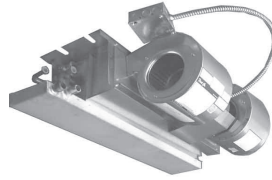


## HBC Series

Horizontal Fan Coil - Uncased  
Hydronic Cooling / Hot Water Heating



UNIT MODEL	BLOWER MOTOR (QTY)	BLOWER ASSEMBLY	BLOWER HSG. (QTY)	BLOWER WHEEL (QTY)	COIL ASSEMBLY					DRAIN PAN
					3 ROW	4 ROW	3/1 SPLIT	3/2 SPLIT	4/1 SPLIT	
3HBC	M4 (1)	330-1	210-1 (1)	W29 (1)	320-676	320-694	320-682	320-688	320-700	9-3HBCLDP (LH) 9-3HBCRDP (RH)
4HBC	M23 (1)	330-2	210-1 (2)	W31S (2)	320-677	320-695	320-683	320-689	320-701	9-4HBCLDP (LH) 9-4HBCRDP (RH)
5HBC	M23 (1)	330-3	210-1 (2)	W29 (2)	320-678	320-696	320-684	320-690	320-702	9-5HBCLDP (LH) 9-5HBCRDP (RH)
6HBC	M5 (1)	330-4	210-1 (2)	W31S (2)	320-678	320-696	320-684	320-690	320-702	9-6HBCLDP (LH) 9-6HBCRDP (RH)
8HBC	M14 (1)	330-5	210-1 (2)	W29 (2)	320-679	320-697	320-685	320-691	320-703	9-8HBCLDP (LH) 9-8HBCRDP (RH)
10HBC	M24 (1)	330-6	210-2 (2)	W32 (1) & W32-1 (1)	320-680	320-698	320-686	320-692	320-704	9-10HBCLDP (LH) 9-10HBCRDP (RH)
13HBC	M14 (2)	330-7	210-3 (4)	W28 (4)	320-681	320-699	320-687	320-693	320-705	9-13HBCLDP (LH) 9-13HBCRDP (RH)

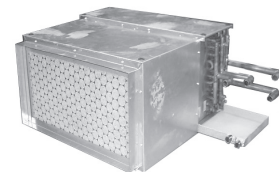
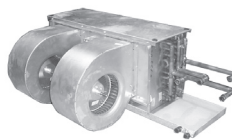
**NOTES:**

- Number in ( ) is quantity per unit.
- Units may be left or right handed.

**Warning:** Altering a First Co. product or replacing parts with non-authorized factory parts may result in adverse operational performance and / or a possible hazardous safety condition.

## HYB, PHYB Series

Low Boy Horizontal Fan Coil  
Hydronic Cooling / Hot Water Heating



UNIT MODEL	BLOWER MOTOR (QTY)	BLOWER ASSEMBLY	BLOWER HSG. (QTY)	BLOWER WHEEL (QTY)	COIL ASSEMBLY						DRAIN PAN
					3 ROW	4 ROW	6 ROW	3/1 SPLIT	3/2 SPLIT	4/1 SPLIT	
12(P)HYB	M812 (2)	340-88	210-595 (2)	W94 (2)	320-552	320-553	320-554	320-555	320-556	320-557	350-81C
16(P)HYB	M812 (2)	340-86	210-594 (2)	W33 (2)	320-559	320-560	320-561	320-562	320-563	320-564	350-82C
20(P)HYB	M81 (2)	340-87	210-593 (2)	W34 (2)	320-566	320-567	320-568	320-569	320-570	320-571	350-83C

**NOTES:**

- Number in ( ) is quantity per unit.
- Units may be left or right handed.

**Warning:** Altering a First Co. product or replacing parts with non-authorized factory parts may result in adverse operational performance and / or a possible hazardous safety condition.

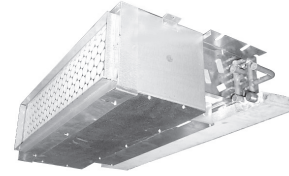
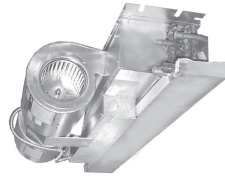
# First Co.

## HH - PHH Series

Horizontal Fan Coil

Chilled Water - Hot Water / Electric Heat

300 - 1400 CFM, 2 - 12 KW



UNIT MODEL	kW	HEATER ELEMENT	HEATER MODULE	MOTOR (240V)	FAN RELAY	X-FORMER	SEQ.	LIMIT STAT	FUSE LINK	BLOWER ASSEMBLY	BLOWER HOUSING	BLOWER WHEEL	COIL. - (DIR.) - #COIL ROWS
3HHS	-2	315-5-1	310-4-1	M11	E130	E137	E141	E144	E322	330-14	210-1	W29	320-711 - (L/R) - 3 320-712 - (L/R) - 4
	-3	315-5-2	310-4-2										
	-4	315-5-3	310-4-3										
	-5	315-5-4	310-4-4										
4HHS	-3	315-4-1	310-1-1	M12	E130	E137	E141	E144	E322	330-15	210-1 (2)	W31S (2)	320-713 - (L/R) - 3 320-714 - (L/R) - 4
	-5	315-4-2	310-1-2										
	-6	315-4-3	310-1-3										
6HHS	-3	315-4-1	310-1-1	M13	E130	E137	E141	E144	E322	330-16	210-1 (2)	W31S (2)	320-715 - (L/R) - 3 320-716 - (L/R) - 4
	-5	315-4-2	310-1-2										
	-6	315-4-3	310-1-3				E143	E144 (2)	E322 (2)				
	-8	315-4-4	310-1-4										
6HH	-3	315-4-1	310-1-1	M8	E130	E137	E141	E144	E322	330-9	210-1 (2)	W31S (2)	320-715 - (L/R) - 3 320-716 - (L/R) - 4
	-5	315-4-2	310-1-2										
	-6	315-4-3	310-1-3				E143	E144 (2)	E322 (2)				
	-8	315-4-4	310-1-4										
	-10	315-4-5	310-1-5										
8HH	-5	315-4-2	310-1-2	M10	E130	E137	E141	E144	E322	330-10	210-1 (2)	W31S (2)	320-717 - (L/R) - 3 320-718 - (L/R) - 4
	-6	315-4-3	310-1-3										
	-8	315-4-4	310-1-4				E143	E144 (2)	E322 (2)				
	-10	315-4-5	310-1-5										
10HH	-5	315-4-2	310-1-7	M10	E130	E137	E141	E144	E322	330-12	210-2	W32 & W32-1	320-719 - (L/R) - 3 320-720 - (L/R) - 4
	-6	315-4-3	310-1-8										
	-8	315-4-4	310-1-9				E143	E144 (2)	E322 (2)				
	-10	315-4-5	310-1-10										
12HH	-5	315-4-2	310-1-15	M35	E130	E137	E141	E144	E322	330-52	210-2	W27 & W27-1	320-721 - (L/R) - 3 320-722 - (L/R) - 4
	-6	315-4-3	310-1-16										
	-8	315-4-4	310-1-17				E143	E144 (2)	E322 (2)				
	-10	315-4-5	310-1-18										
	-12	315-4-6	310-1-25										

**NOTE:**

1. Number in ( ) is quantity per unit.

**Warning:** Altering a First Co. product or replacing parts with non-authorized factory parts may result in adverse operational performance and / or a possible hazardous safety condition.